

READ ONLINE AT WWW.GREATBARRIER.CO.NZ/AOTEAADVOCATE



DOUBLE VICTORY FOR BARRIER MUAY THAI

A huge congratulations goes to Evander Sykes and Jason Skippis for hard-earned Muay Thai wins at the Sunday Sessions event at the ABA Stadium Stadium on the 8 December.

The pair's hardwork and dedication paid off, training consistently at Logan Golaboski's sessions each week and sticking to strict diets to ensure they had successful weigh ins the day before their fights.

Jason, incredibly, managed to pull off a win despite fracturing his toe during the first round of his fight.

The boys were supported by a group of familiar faces in the crowd from the Barrier. A huge thank you goes to dedicated Barrier Muay Thai trainer, Logan, for who this would not have been possible.

To get the boys to Auckland and to the competition, a raffle was put on - thanks also goes to anyone in the community who bought a ticket!

Thanks to Sammi Moore for contributing words and photos.

WHAT'S INSIDE

 Meet Our New Police Team  Summer Calendar + Full G Star Event Guide

 Holiday Recycling Schedule  New Short Stay Moorings  FENZ Fire Ban Notice

 The Village at Aotea Brewing  MantaWatch NZ Launches Sighting App

GET INVOLVED

Auckland Council is working towards eradicating and keeping out a number of high risk pest plant species from Aotea. We need your help to hunt these plants out.

- ✓ Visit inaturalist.org
- ✓ Join project 'Aotea High Risk Weeds'
- ✓ Identify and record your weedy find!

✉ pestfree@aucklandcouncil.govt.nz



SUMMER PRINT SCHEDULE

Looking to make a submission or advertise? Email us on AoteaAdvocate@gmail.com
Next Submission Deadline: 13 January by 10am Next Issue Available: 16 January



WELCOME NEW POLICE TEAM

Andrew Osborne (Andy) and Policarpo Capunitan (Ding) have recently been recruited as our new island police team.

We thought it was time to catch up to introduce and welcome them both to our community.

So, we asked them a few quick-fire questions:

Q: Where did you grow up?

Andy: I was born in Whakatane, family moved to Auckland when I started school.

Ding: I am from the Philippines and have been in NZ for 21 years.

Q: Will your families be joining you on the island?

Andy: My wife Mandy will be moving over towards the end of January; our two boys are 24 & 23 and won't be moving to GBI but are both keen to spend time here.

Ding: My wife Noemi will be coming to GBI early 2025, but daughter Bella will start Uni next year and will stay in Auckland.

Q: What other jobs have you had prior to joining NZ Police?

Andy: I have worked with youth and long term unemployed in a Training & Employment role. I have also been involved in a couple of family businesses.

Ding: I've worked for a bank, UN Volunteer, NGO, retail, food manufacturing.

Q: How long have you served with NZ Police?

Andy: I have served with the NZP for 21 years.

Ding: I joined the Police 11.5 years ago.

Q: Where were you based prior to taking on the Aotea Great Barrier Role?

Andy: The bulk of my career has been in the Auckland City District (mainly the CBD) apart from three 12-month deployments overseas with the NZP. Autonomous Region of Bougainville (AROB), Solomon Islands and Pitcairn Island.

Ding: I was stationed in Auckland City for 8 years and the last couple of years as a Sergeant with the Ethnic Services Team at Henderson Police Station, Waitemata.

Q: What "inspired" you to apply for the Aotea Great Barrier Role?

Andy: I first relieved here in 2013 and fell in love with the place and the people. I have always wanted to Police fulltime in a small community.

Ding: I started relieving at GBI 5 years ago and have always loved working on the island.

Q: Is there anything about what you do that could be described as a typical day?

Andy: Everyday Policing can be very different; anything can happen and sometimes it happens all at once. The day can go from mundane to next level.

Ding: No day is the same...you never know what job you might be doing or attending.

Q: What are your interests when you off duty?

Andy: Spending time with family, trying to be fit and healthy and enjoying the outdoors.

Ding: I love any outdoor activity but especially like tramping.

Thank you both it's good to know the island's policing is in good hands.

Interview from Cushla Buchanan

ANOTHER SUCCESSFUL GARDEN TOUR

The Spectacular by Nature Garden Tour on Aotea Great Barrier Island always takes place on the last Saturday in November. In 2024 it went ahead with more than a dozen vans and two boats, all manned by enthusiastic local drivers/captains and guides. This tour is a fundraiser for the island Health Trust - for dental equipment this year - and features four different tours to different areas of the island. It's a fantastic community effort.

Owners/gardeners welcomed adventurous garden aficionados in a total of 28 very different gardens, all reflecting their owner's personalities. They walked and talked us through their hidden gems, we admired stunning coastal back drops and enjoyed scrumptious morning and afternoon teas served by friendly and chatty locals, who gave us a real insight into island life.

Because of our island's isolated location - 4.5 hours from Auckland - gardeners here can't just pop into a garden centre. This means ingenuity, recycling and gifted plants play an



important role. Each garden(er) has a story or two to tell about their plants and systems and there was garden inspiration to be found for everyone during this fabulous tour.

The Great Barrier Island Community Health Trust would like to thank all those who have supported the success of the Great Barrier Island Spectacular by Nature Garden Tour this year.

Words by Hilde Hoven



100 ISLAND STORIES FOR TIM HIGHAM

Tim Higham began interviewing locals and people connected to the island in January this year.

The show takes place on Monday mornings on Aotea FM - Live. The interviews are then posted on the Island Stories podcast on Spotify and on the Aotea FM website.

Next week Tim will reach a momentous 100 interviews with over 10,000 plays on Spotify.

Through this project, Tim has done an amazing job capturing and archiving incredible stories from people across the motu.

Thank you Tim for your mahi, it has been an absolute gift to the community to hear the stories of so many talented and interesting people who call Aotea home.

Ngā mihi nui Tim.

You can find Tim's interviews by searching 'Island Stories' on Spotify or head to www.aoteafm.nz/island-stories-podcast



Tim with Orla Cumisky & Fraser Munroe earlier this year.

THE AOTEA ADVOCATE

The Aotea Advocate is owned and put together by Bree Biederman and Lucy Dixon. It is run on community advertising and submissions.

If you have something you would like to contribute or would like to know more email us on aoteaadvocate@gmail.com

DEC/JAN EVENT CALENDAR



SUNDAY	MONDAY	TUESDAY	WEDNESDAY	THURSDAY	FRIDAY	SATURDAY
15	16	17	18	19 Somatic Movement @ Art Gallery until Feb 6 Details within	20 Hatha Yoga 10am Glenfern	21 Growers and Makers Market 9:30am CCC Annie G & Scottie Currach Irish Pub
22 Aotea Army Working Bee 9am Claris Crossroads Contact Leon or just show up Afternoon Cruise The Currach from 2pm with Shane Langford	23 Gentle Yoga 10am Tryphena Hall	24 Sean Kelly Music Christmas Eve at The Currach	25	26	27 Hatha Yoga 10am Glenfern	28 Yoga 9am Tryphena Hall
29 Raupō Taranga with Rodney Ngawaka at Glenfern 10-3pm Bring a picnic Full Details Inside	30 Gentle Yoga 10am Tryphena Hall	31 Barrier's Biggest Party Claris Club Details within Resolution Barrier Social Club Details online Celtic Connection + The Currach Music & NYE Dinner Ticketed Event	01 JANUARY 2023 Live Music with Special Guest at The Currach	02 New Years Picnic from 10am at Claris Sports & Social Club Full details within	03	04 Bird Aversion Dog Training Full details below King Kapisi Barrier Social Club Doors 7pm Full details inside
05 Sunday Session at Aotea Brewing Ft. Black Comet 12 - 6pm Tickets at AoteaBrewing.co.nz Afternoon Cruise Live Music from 2pm The Currach Irish Pub	06 Gentle Yoga 10am Tryphena Hall	07 Yoga for Presence 5:30pm Art Gallery	08	09 Somatic Movement & Mantra Meditation with Eunate 1.30-2.30 Tryphena Hall	10 OOME Family Fun Event Medlands EcoHub 1-4pm Fun & Games Bring cash for baked goods & merch Live Music Evening with Special Guest at The Currach Irish Pub	11 Yoga 9am Try Hall Nathan Haines at The Currach 7pm Tickets at GStar.co.nz Full details inside
12	13 Gentle Yoga 10am Tryphena Hall Deadline for submissions for next issue of Advocate 10am	14 Yoga for Presence 5:30pm Art Gallery Yoga 5:30pm at Okiwi kura	15	16 Somatic Movement & Mantra Meditation with Eunate 1.30-2.30 Tryphena Hall Issue 16 Available	17 Hatha Yoga 10am Glenfern	18 Yoga 9am Try Hall Drax Project Barrier Social Club Doors 5pm Show 8pm Tickets at GStar.co.nz Full details inside
19 Alan Jager Live Music at The Currach Irish Pub	20 Gentle Yoga 10am Tryphena Hall	21 Yoga for Presence 5:30pm Art Gallery Yoga 5:30pm at Okiwi kura	22	23 Somatic Movement & Mantra Meditation with Eunate 1.30-2.30 Tryphena Hall	24 Hatha Yoga 10am Glenfern Salmonella Dub at Claris Sports Club Tickets at GStar.co.nz Full details inside	25 Yoga 9am Try Hall Growers and Makers Market 9:30am CCC

Yoga Class - details same as above or below

WANT TO SUBMIT AN EVENT? EMAIL US AT AOTEAADVOCATE@GMAIL.COM

FIND THE FULL EVENTS CALENDAR ONLINE AT WWW.GREATBARRIER.CO.NZ/EVENTS

Need to talk?

Free in-person, phone or online counselling sessions are available for you and your whānau.

For appointments, please contact:

Youth & Whānau Counselling

Sam Grimshaw - 021 0297 8508
Margie Matthews - 021 496 620

Adult Counselling

Dione Davies - dione@aftertherain.co.nz
Margie Matthews - 021 496 620

If you are in crisis, call 111 or text/call 1737



10AM / 2ND JANUARY 2025
GBI SPORTS & SOCIAL CLUB CLARIS

GOLD COIN ENTRY

JOIN US FOR OUR 2025
NEW YEARS PICNIC

FUN FOR THE WHOLE FAMILY

- STALLS • FOOD • GAMES
- LIVE MUSIC • WATER SLIDE
- CHARITY AUCTION & RAFFLE

Aotea Great Barrier Local Board

AOTEA FAMILY SUPPORT GROUP FUNDRAISER. ALCOHOL AND DOG FREE EVENT.
CONTACT TARYN WILKS 0220445570 / NEWYEARPICNIC@GMAIL.COM

BIRD AVERSION

SATURDAY 4TH JANUARY 2025

9 - 10AM OKIWI AIRSTRIP
11AM - 12PM OKUPU BEACH
1230 - 1.30PM MEDLANDS CAMPGROUND
2 - 3PM SUNKEN ROCK SAILING CLUB, PURIRI BAY



G-STAR ENTERTAINMENT

DEAD BEAT

COOPERS RUN | 80K BANGERS BAND | ANNIE G & THE ISMS

BARRIERS BIGGEST PARTY

New Years Eve

DOORS OPEN 4PM | UNDER 18S FREE* | CLARIS CLUB | GREAT BARRIER ISLAND

TICKETS FROM GSTAR.CO.NZ

AOTEA + AUDIO BARRIER AIR JACK DANIELS Aotea fm Jagermeister B.B.

G-STAR ENTERTAINMENT

RETURN OF THE KING

KING KAPISI

SAT JAN 4TH | BARRIER SOCIAL CLUB | DOORS 7PM | R18

TICKETS FROM GSTAR.CO.NZ

Aotea fm BARRIER AIR B.B. AOTEA + AUDIO

G-STAR ENTERTAINMENT

NATHAN HAINES

SOLO DJ/LIVE SET

GREAT BARRIER ISLAND

THE MUSIC LEGEND FRANKS HAS UNLEASHED HIS SOLO DJ SET WITH THE ENDS TREMBLING TO DANCE FOR ONE UNFORGETTABLE NIGHT

SAT JAN 11 | 7PM | THE CURRACH

TICKETS FROM GSTAR.CO.NZ

Aotea fm BARRIER AIR AOTEA + AUDIO B.B.

G-STAR ENTERTAINMENT

drax project

live

SAT 18 JAN | BARRIER SOCIAL CLUB

AOTEA + AUDIO Aotea fm BARRIER AIR B.B.

G-STAR ENTERTAINMENT



SALMONELLA DUB

FEATURING WHIRIMAKO BLACK + MIGHTY ASTERIX + SAL DUB HORNS

Friday Jan 24 | Claris Club
Great Barrier Island

Aotea fm BARRIER AIR AOTEA + AUDIO SEALINK B.B.

G-STAR ENTERTAINMENT

SANOI

SUNDAY SESSION

W/ HARRY CHARLES

Sunday 26th January

AOTEA BREWING GREAT BARRIER ISLAND BREWERY OPENS 12PM SHOW FROM 2PM

TICKETS FROM GSTAR.CO.NZ

Aotea fm BARRIER AIR AOTEA + AUDIO

G-STAR ENTERTAINMENT



MOLLIE SMITH



GREAT BARRIER ISLAND

THE CURRACH
FEB 1 | 7PM

TICKETS FROM GSTAR.CO.NZ

AOTEA + AUDIO Aotea fm BARRIER AIR

DEC 24 - FEB 25 GIG GUIDE

SUMMER IS BETTER WITH

G-STAR ENTERTAINMENT



TICKETS FROM GSTAR.CO.NZ



WELCOMING IN 2025 ON GREAT BARRIER ISLAND WITH G STAR ENTERTAINMENT

Great Barrier Island, Aotea, is gearing up for its most exciting summer yet, thanks to G Star Entertainment's game-changing lineup of events. With a commitment to bringing world-class entertainment to the island, the summer season kicks off with **Barrier's Biggest Party** on New Year's Eve at the Claris Club, followed by the much-anticipated return of Kiwi hip-hop legend **King Kاپisi** on Jan 4.

New Year's Eve is set to be headlined by DEADBEAT - The alter ego of Shelton Woolright, the creative powerhouse and founding member of iconic rock bands Blindspott and I Am Giant.

Combining live drumming with a mix of Bass House, Drum and Bass, Trap, Hip-Hop, and a dash of rock, DEADBEAT offers a high-energy "Drum DJ" experience like no other. His electrifying stage presence and unique sound will set the perfect tone as Aotea dances its way into 2025. But the excitement doesn't end there. 80K, the high-energy covers band from Mount Maunganui, will bring their eclectic mix of hits across genres like Motown, reggae, rock, and New Zealand classics. They'll be joined by Coopers Run, the award-winning country duo, and local favourite Annie G and the Isms, whose soulful, sassy performances have earned her a loyal following on the island.

G Star has made it a priority to ensure that Barrier's Biggest Party is accessible to as many people as possible. Under 18s go FREE (must be accompanied by a parent or guardian at all times). Afterpay options are available, making it easier for everyone to secure their tickets.

Best-priced tickets are on sale now to ensure affordability - Shuttles will run all night, providing safe and convenient transport to and from the party.

On January 4, the celebrations continue with King Kاپisi LIVE at the Barrier Social Club. Following his sold-out show last January, Kاپisi returns to Aotea to deliver another night of unforgettable music and electrifying energy.

Recently awarded a Queen's Honour Medal for his contributions to the arts and his community, King Kاپisi is a trailblazer in New Zealand hip-hop. Fans can look forward to a performance filled with passion, charisma, and his iconic tracks.

In a statement, G Star Entertainment said, "We're proud to be bringing a new level of entertainment to Great Barrier Island," said a spokesperson for G Star Entertainment."

"Our goal is to provide unforgettable experiences for locals, visitors, and venues alike, and this summer lineup represents

that vision in action."

G Star Entertainment's summer lineup doesn't stop there. With upcoming performances from **Salmonella Dub** and **Drax Project**, the island is set to host some of New Zealand's biggest names, drawing crowds from near and far and providing a major boost to local venues and businesses.

Tickets for all events are on sale now at gstar.co.nz, The Rocks Bottle Shop, and the respective venues.

Whether you're ringing in the New Year at the Claris Club or joining the first party of 2025 at the Barrier Social Club, this summer promises unforgettable experiences for everyone on Great Barrier Island.



GROWING THE COLLECTIVE ON MASON ROAD

Aotea Brewing, the little craft brewery housed in shipping containers in the fields behind Medlands Beach, have been a spot for delicious brews and a good chat for the last five years. But now that spot is changing. There has always been a desire to have the Mason Road site be a hub, a little village, where local businesses could co-locate and support each other's activities and this year that idea is becoming a reality.

From this summer there will be a plant nursery, a coffee roastery, a food truck and the brewery all sharing the same site and everyone involved is excited about what opportunities that can create. Whether it's using recycled water from the brewery to irrigate the nursery, using the beer and coffee in delicious recipes in the food truck or offering customers the chance to grab a hot coffee at one end of the day and a cold beer at the other, the possibilities to work together and support one another are a big priority for all involved.

"We all know how tough the last few years have been and how that is felt even more strongly on a remote island. We also know that we are more resilient when we work together, whether that's just giving each other support or cooking up creative ideas as a group, so we can't wait to see what we are capable of as a little village."



Aotea Brewing

Aotea Brewing is one of the few commercial off grid breweries in the world and has stayed committed to no single use packaging. Serving up a diverse range of beers brewed onsite alongside wine, cider and non-alcoholic drinks. Stay for a pint in the sunshine or take away a flagon for home.

Open 12 - 6pm, Tuesday - Sunday through the summer.

Check out our public holiday hours and events on our website or Instagram.

Call for group bookings or brewery tours.

022 0430 705

www.aoteabrewing.co.nz

@aoteabrewing



Good Neighbours Food Truck

Get ready to embark on a culinary journey with new flavours from around the globe, simple but flavoursome food, each dish is an adventure crafted from scratch with care and passion in order to create a unique dine out experience on Aotea.

Open 12 - 6pm, Tuesday - Sunday through the summer.

Eat in or take away

Want to enjoy a feast with your favorite crew?

For group bookings and all other enquiries:

Call, text or send a Whatsapp message to

021 0731 914

@goodneighboursfood



Aotea Roast

Aotea Roast, New Zealand's first off-grid coffee roastery, has moved to its new site on Mason Road in Medlands as part of a joint venture with the brewery crew. We will be producing a range of coffee including Fair Trade Organic blends and Single Origin roasts. Come down during brewery hours to check out the roasting process, meet the team, and pick up freshly roasted coffee bags and merch. Exciting changes are brewing this summer—stay tuned!

Find more info and online orders at

www.aotearoast.co.nz



Motu Community Native Plant Nursery

Aotea's eco-sourced community native plant nursery has transformed in the last six months!

We are growing a wide range of natives with a goal of enabling restoration on Aotea with eco-sourced and biosecure plants.

We are thrilled to be joining the little village on Mason Road and collaborating with Aotea Brewing to create a recycled watering system from their brews to irrigate the nursery.

We are currently establishing the new site, but in the meantime you can contact us here:

MotuCommunityNursery@gmail.com for all inquiries or visits to Okiwi Nursery

Facebook: Motu Community Nursery

Opening hours to be announced soon - stay tuned.

NEW YEARS PICNIC COUNTDOWN

The countdown is on for the fun family day out, the New Years Picnic event on January 2nd 2025, 10am Claris Sports and Social Club. This event is the biggest annual fundraiser for Aotea Family Support Group and could not happen without the generous support of businesses and many community members. It is incredibly heartwarming to see and be apart of.

Legendary duo Sean Kelly & Gerry O'Neil from The Celtic Connection will be entertaining you for the day, supported by local artists Zarina and Shaun, and Shane Langford. Aotea Audio are supporting the day with their sound equipment! Thanks guys. The wonderful Brett O'Riley will once again be MC for the Auction. There will be plenty of seating and shade provided, thanks to Kaitoke school and the O'Shea's, but it would be cool for people to still bring a picnic blanket / umbrella. There will be a fantastic selection of stall holders and food vendors. If you haven't already, please get in contact to book a stall (contact details below).

There are lots of kids games planned, with the tennis court sectioned into various kids games, a space for the littlies to colour and play, water slide and the always fun and entertaining tug of war, sack race, egg and spoon, hobby horse racing and an adult milk sculling competition!

There is an incredible Women's Pamper Raffle going on sale Monday 16th December at THE ROCKS, winner drawn at the event. A huge thanks to the generous supporters for this. Items include; \$100 Aotea Beauty Voucher; 1hr Florence Therapies Massage; Private Yoga Class, Linda Power; Nature Bathing Experience, Vicky Kyan; Peppermint

foot cream, Kaitoke Wilds; Te Ao Haurongo Hydrosol; Homeopath Rescue Remedy and Arnica, Linda Rowe; Jenz Jewels; Homemade goodies, Danny Blackwell; Bubbles, vodka, cocktail shaker, The Rocks, cocktail glasses, chocolate in a beautiful basket! This a great opportunity to do something nice for your lady - got to be in to win, so go get your tickets!

We have an incredible line up of Auction Items!

Here is a draft of auctions items (yet to be finalised):

- › Surf Lesson 2x people - Kelly O'Toole
- › Wake-e-Board voucher, Bryce McKenzie
- › Gardeners Glory: 3 bags organic potting mix, 2 organic compost (Aotea Gas and Garden), 1 truck load mulch, cage of dry manuka firewood (Chris Broadbent), \$50 ITM voucher
- › ITM vouchers
- › \$100 Okiwi Passion voucher
- › Trailer Load (~2 cube) dry pine - Bow Davenport
- › 1 cube hot mix firewood - Barney Scott
- › 1 cube hot mix firewood - anonymous (we know who you are)
- › 5 cube hot mix firewood, 5 cube mulch, Aotea Arb, Sid West
- › Barrier Air return Ticket 2x Adults
- › Sealink Return Trip, Vehicle, 2x Adults, 2x Children
- › Stihl battery Garden Pruner set, Tools for the Job
- › \$500 worth of Bunnings Goodies

› Hooked on Barrier - West Coast Sightseeing Tour, 2 adults and 4 kids or 4 adults.

- › Prints form artist Helen McLorinan
- › Carol Comer - Framed photography
- › "Taste of Aotea Voucher": Mulberry Grove Thai, Pah Beach cafe, Currach, Kats Kitchen Barrier Social Club, Fat Puku, Burger Shack, Baked on Barrier, Candy Shells Kitchen and Aotea Brewery
- › Wettle - kids spear gun and mask and snorkel
- › Bottle of Island Gin
- › Gulf Fuels vouchers
- › Coastguard - life jacket
- › Stonewall Store vouchers
- › Sterling silver Monstera drop earrings Tania Sutherland

Plus some great goodies as giveaways/prizes: ABC voucher, GBI Bee.co gift boxes, hand cream, t-shirts, Free and Feral beanie and hat, The rocks T-shirts, Barfoot and Thompson beach bags, towels, and other goodies!

Once again, I can't thank everyone enough for their generous support. **If you would be keen to help set up some marquees with me on January 1st, help with pack down or be keen to volunteer some of your time on the day of the event please get in contact.**

It's a HUGE task to set up and I would really appreciate some help.

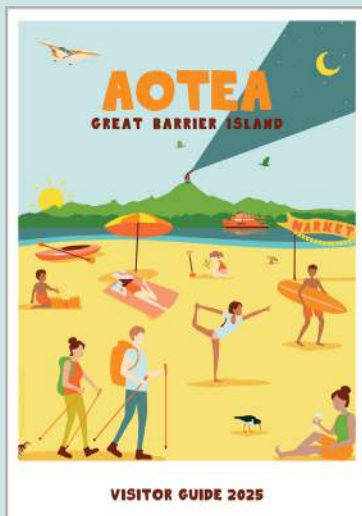
Contact Taryn Wilks E: newyearpicnic@gmail.com Phone: 0220445570 or through facebook.

NEW VISITOR GUIDE OUT NOW

The new visitor guide for 2024/2025 is now available. Copies are available from the visitor information desk at the airport in Claris or you can also view and download online at greatbarrier.co.nz.

This issue features a new A3 map, a fresh new cover design from local graphic designer Sarah Matthew and more.

You can also find a new monthly dine out guide at greatbarrier.co.nz and hard copies are available from the visitor information desk.



60 DAYS OF SUMMER ART EXHIBITION

Thank you to the positive word out into the community, sharing the various events we have. To all visitors, we hope that you leave feeling enriched by Aotea's talent and we appreciate your support.

Currently on show at the Claris based Aotea Arts & History Village is 60 Days of Summer - An open gallery showcasing what Summer means.

As we see 2024 in reflection, Aotea Arts & History Village acknowledge the wonder that each artist brings to our community. For our artists bringing in work when they can, your contribution matters. There have been 15 artists give hundreds of hours to their varying skills in exhibition in 2024. Their work leaves legacies for future generations to admire and learn from. Creating original work that tells stories unique and personal. All for us to enjoy.

Our hours are aimed at 7 Days from 10am to 4pm. However we are so kindly open by our volunteers so some days we might not open.

Aotea Arts & History Village

60 Days of Summer
Art exhibition
6 Dec - 6 Feb

80 Hector Sanderson Rd, Claris

420 Shoal Bay Rd
\$975,000
Across the road from Gooseberry Flat Beach. A-frame bach on 905m² flat site with uninterrupted views and large deck. Embrace the laid-back coastal lifestyle.
barfoot.co.nz/903114

BARFOOT & THOMPSON
Call Mike or Karen, 021 825 826 / 021 765 776

Aotea fm
GREAT BARRIER ISLAND

BROADCASTING FROM 7AM EVERYDAY
TUNE IN 94.6 | 104 | 107FM
STREAM ONLINE @ AOTEAFM.NZ
FIND WEEKLY SCHEDULE ONLINE

ABOVE BOARD - SHORT STAY MOORING RENTALS COMING SOON

November's business meeting commenced just as news of former local MP Nikki Kaye's death reached New Zealanders. Nikki was a tireless local MP, who fought particularly hard for the Barrier, and even harder for our island's youth. Right to the end she was getting stuck into local projects and trying to improve things for our people and environment. She loved Aotea and many people here loved her back. So it was fitting that the local board was able to acknowledge her with a minute's silence, along with Eric Hockley and Rosanna Maxine Whaanga (nee Beazley), who had also passed away in the preceding month.

The board paid tribute to (retiring) Adele and Leonie, for their "many years of commitment to the health of the residents and visitors of Aotea / Great Barrier" and to outgoing Te Kura o Okiwi principal Colin Griffiths, for his "commitment to education at Okiwi School and the wider community of Aotea". Board members also congratulated new Te Kura Okiwi principal Kaarlie Clifton and wished her all the best in her new role.

The most reportable part of the meeting from here on was the announcement of a \$300,000 project to install short-stay moorings in two key locations where anchoring is currently banned due to caulerpa restrictions. Six moorings will be put in in Tryphena, and four in Whangaparapara.

Board deputy chair Chris Ollivier explains further: "The problem we were trying to solve was the economic impact of the exotic caulerpa restrictions. Whilst we are supportive of the need to maintain restrictions and prevent the spread of caulerpa - unfettered anchoring would be a disaster - we recognise the effect the CAN has on the economy of the island. Boaties have been unable to come in and go to the pub, buy stuff at the shop, walk the tracks etc."

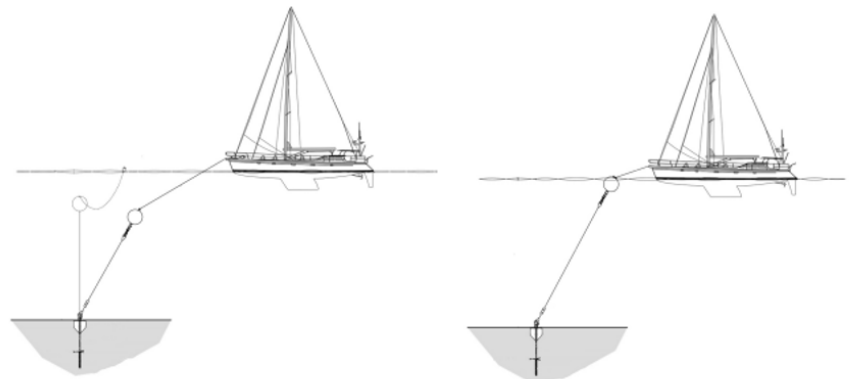


Diagram of non disturbance moorings

But from early next year, those boaties will be able to take advantage of "environmentally sensitive, non-disturbance moorings"; each with a screw anchor, and mooring tackle lifted off the sea floor with floats. Vessels can be up to 15m.

"They are for short stays; 1-2 nights," says Chris. "And you won't be able to leave your vessel unattended overnight. They will be free to use, with an online booking system being set up, and a calendar for each mooring."

The moorings don't come cheap. Each unit is \$18,000 plus specialist vessel relocation costs, freight etc. The Ministry of Primary Industries has put up \$150,000 and the board has underwritten additional funding of up to \$150,000.

Chris reckons the "real story" here is the collaboration and deftness of council staff (not something you hear about all the time!). "Various different departments surrounded us to make it happen- planning, parks, community facilities.

The moorings required resource consents, and council has taken on the responsibility of owning them. I was so impressed by how fast everyone moved to enable the project."

In order to future proof the project, resource consent is also being obtained for Port Fitzroy, in case it too gets closed to anchoring in future.

It was hoped the moorings would be in place before Christmas, but it's now looking more like early January. The booking system will be live in due course on the Aotea Caulerpa Response Team website (www.acrt.co.nz/)

Above Board is written by Kathy Cumming. Kathy is Auckland Council's Community Broker, but she covers these meetings as an independent journalist (so she can use more fruity language).

AOTEA DESTINATION MANAGEMENT GROUP UPDATE

In August last year the Aotea/ Great Barrier Destination Management Plan (DMP) was adopted, with the aim of changing the way we manage tourism on Aotea. The plan essentially puts community and environment more at the fore of decision making when it comes to our visitor industry. A "DMP steering group" was subsequently established to oversee implementation of the plan. The group's been cracking on, so we thought we'd catch up with chair (and local property owner) Jason Elliott to get the latest.



DMP group Chair - Jason Elliott

Remind us what the DMP steering group is and how it came about?

The group came together to execute the DMP (<https://journey.aucklandnz.com/destinationakl/destination-plans>). Visitors

bring a valuable contribution to many households in our community, but we know there is certainly such a thing as overdoing it. Balance is key. Our aim is to find that balance and develop a sustainable visitor economy that supports our people, culture and environment on Aotea.

Who's part of the group?

We've got a great group that represents a wide range of people passionate about the island.

They include representation from Ngāti Rehua Ngāti Wai ki Aotea, local board members, key transport operators, accommodation and experience providers, and environmental and waste management champions.

What has the group been up to in recent months?

We have been meeting roughly once a month since April this year. Our first task was distilling down the extensive list of potential actions highlighted in the DMP to a more focused and actionable list. We are also in the process of establishing a trust so we can maintain public ownership of assets such as the greatbarrier.co.nz website. Jason Ross (there's two Jasons, it can get confusing) from Island Gin led a 'Barrier Briefing' in September, where the island's tourism operators got together and shared what they offer so we can all work together to help visitors have the best possible experience.

What are the priority areas for you?

While some of our more administrative tasks like the Trust set up continue in the background, we are now focussing on the key actions we highlighted from the DMP:

1. Data collection so we can properly quantify the number of visitors to and from the island, how long they stay for and whether they're returning or new visitors - all of which is crucial information to better understand the profiles of who is visiting the island.
2. Create a unified brand to enable us to speak with a collective voice to the right type of visitor who will most appreciate the island way of life. This will build on what we already have with "A World of Its Own".
3. Short term Initiatives to help businesses right now to make the most of the current season after a tough few years.

Do you feel you're making progress?

We are making steady progress towards our goals and the level of commitment by everyone involved has been amazing. It's worth noting that we are working over a long-term timeline. The aim is not to make any drastic changes, but to enhance the current settings so the island can make the most of its visitor opportunity without jeopardising the things that make this place so special.

Words by Kathy Cumming

RESOURCE RECOVERY CENTRE AND TRANSFER STATION HOURS

HIGH SEASON (23 DEC – 2 FEB)



9AM – 4PM MONDAY TO FRIDAY

10AM – 3PM SATURDAY

CLOSED SUNDAYS & PUBLIC HOLIDAYS

Kerbside collections are **unchanged** by Stat holidays this Christmas, so collections occur south of the Crossroads on Monday and north of the Crossroads on Tuesday each week.



FIND FULL HOURS, INFO & RECYCLING GUIDE AT
www.anamata.nz



Building on Aotea this summer?

Make sure you nail that building waste!

Remember to keep your general refuse separate from your building waste, so that we can sort and recycle as much of it as possible.

Better for the environment, better for everyone!

see anamata.nz for more info

MOVING BEYOND FOOD WASTE THIS HOLIDAY SEASON

Keeping the fridge and freezer working well

As we move into the heat of summer, and fill our pantries, it's a great time to check our fridge and freezer temperatures. Fridge temperatures should be between 2°C to 5°C. Most bacteria that cause food poisoning are unable to grow at these temperatures. Freezers should be between -18 and -20°C.

Using a fridge thermometer is the best way to determine the temperature of your fridge but you can also measure it by putting a standard thermometer in a glass of water and leaving it in the fridge overnight and taking the temperature when you open the fridge for the first time the next morning.

If your fridge is too warm, it is best to change the temperature by adjusting the dial in the fridge slowly, ie, only raise or lower the temperature by one increment per 24 hours, until you reach the right temperature.

What can you do if you can't eat or store your left over food on Aotea?

1. Still Good Food

- › Donate fresh and non perishable foods to one of the community pantries located at Medlands community gardens, Mulberry Grove and Okiwi Schools, Anamata, and cans at Claris Airport
- › Offer it to a neighbour either to eat or feed to their animals, or to compost.

2. Food Scraps

- › If you're holidaying on Aotea, check what facilities are available at your accommodation to dispose of food scraps, some have green cones installed which are super easy and convenient to use, others have compost bins and separate kitchen caddies for food scraps.
- › By dropping your food waste to a community compost bin (no fish or meat scraps or general garden waste) or to Anamata where all food and green garden waste is accepted, you ensure that the goodness from it is returned to the soils of Aotea. **Community compost bins are at Mulberry Grove School, Oruawharu/Medlands Community Gardens, and Anamata.**
- › Neighbours may be happy to take food scraps. If it's too smelly to compost, burying it and covering it well is another option
- › Food scraps must be removed from their bags before being put into a composting system.

Words by Jo O'Reilly, Zero Waste Coordinator, Anamata.

GROW FOOD AOTEA

The Food Resilience Aotea website is live!

You will find everything you need to know to look after your food garden this month and also by crop. From fertiliser to variety selection, pest control and storage its all here. You'll also find information about our community gardens, any workshops or Growers and Makers markets coming up: www.foodresilienceaotea.nz

The Oruawharu Community Gardens in Medlands

The Oruawharu Community garden is next to the St Johns Church at Medlands. It is a public place you are welcome to visit, to sit awhile to enjoy the colour and life of nature, to wander, and to forage for interesting and nutritious salad greens, edible flowers and more. Koha to support the gardens can be by volunteering time or making a financial donation.

On a **Friday morning** from 10am you will generally find Saskia the garden coordinator, and volunteers working in the garden (Saskia will post on Barrier Chitchat if she won't be there).

Everyone is welcome to join in, its a great way to get to know our community and way of life.



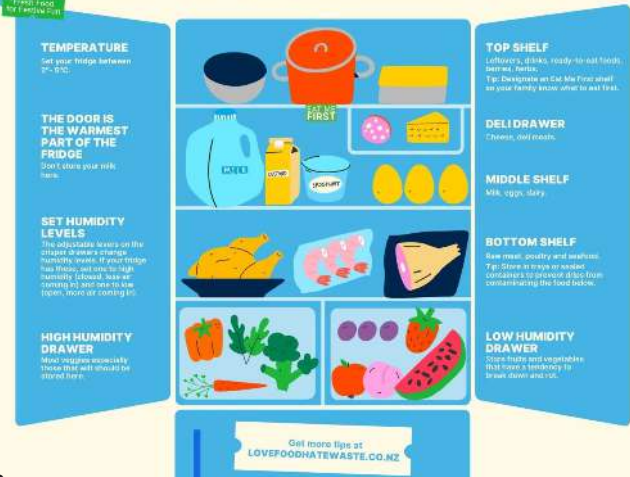
DEALING WITH DOGGY DOODOO

Putting dog poo in a plastic bag in your rubbish bin is not usually the best way to dispose of it on Aotea. Some of your options include:

- › Bury it on your property and soil microbes will break it down into harmless soil (digging a hole and putting a cover over it is an easy way to regularly dispose of it).
- › Flush it down the loo just like human waste.
- › Dog poo in the bush, under leaf litter or a bit of soil, away from where anyone may walk is also a more environmentally friendly option.
- › Always remove the poo from the bag first, only bury or flush the poo, not the bag.



FRIDGE STORAGE BASICS



SUMMER STAR GAZING, DECEMBER 2024

Summer is here and the stars are bright! During December and January astronomical twilight arrives around 21:30 and true night time rises after 22:00. Perfect for night owls! The information below assumes you are stargazing in the evenings. If you're an early bird, plan to be up before 4am to view quite a different set of stars.

Let's start in the west

Bright planet Venus is likely the first object to capture your eye. Venus is the second planet from the Sun and is just a little smaller than Earth. But that's where our similarities end. Venus is one of the most inhospitable places in our solar system with a surface temperature high enough to melt lead!

Saturn is a little higher in the western sky and has a soft golden glow. It's in the constellation of Aquarius, the Water Bearer, who is upside down in our southern hemisphere sky. Saturn is the sixth from our Sun and is a 'gas giant' with wide, icy rings.

Moving to the north east

Bright Jupiter is the fifth and largest planet in our solar system. It currently sits between the horns of Taurus, the Bull. This very large gaseous planet has no solid surface and could contain more than 1000 Earths!

On the back of our upside down Taurus is a sparkling open cluster of stars that is well known world wide. It is Matariki here in Aotearoa, Pleiades in international astronomy, the Seven Sisters in modern literature, Subaru in Japan and is admired and named by many more cultures.

A little further east is the large constellation of Orion, the Hunter. Many of us will know 'The Pot', a southern hemisphere asterism made up of Orion's belt and sword. See if you can spot it in the image of Orion.

Orion is cartwheeling across our southern hemisphere sky. His left foot is the blue-white supergiant star Rigel, 7th brightest despite a significant distance of 860 light years. And his armpit is the red supergiant star Betelgeuse. Orion is followed by his trusty dogs, Canis Major, which contains

Sirius, the brightest star in our night sky, and Canis Minor which contains Procyon, the 8th brightest star.

You can use these images of the stars and planets to help you find your way through the sky. The free app SkySafari was used to create these images, set to 9:59pm on 19th December 2024. You'll notice a subtle shift in the stars each night, which adds up to a bigger shift as the weeks pass.

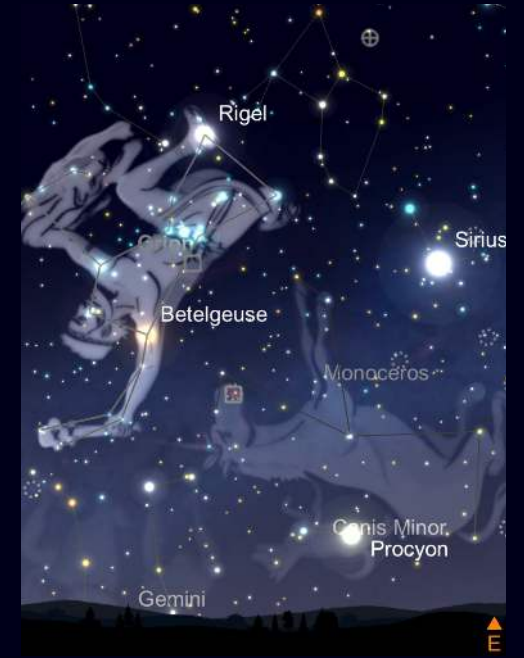
Will you help maintain our International Dark Sky Sanctuary status?

Turn off any outdoor lights, or have them on a sensor. Shield the light from shining upwards and choose warm coloured bulbs. 1800K is ideal - it's written on the bulb.

Now you can gaze up into our pristine dark sky!

To know more about how to keep our night sky dark, and why:

Contact your local Dark Sky Coordinator, Deb Kilgallon (deborahkilgallon@gmail.com).



Kia ora Aotea! Let's talk about our community.

Get in touch about any local issues or if you need support. I'm here to help and would love to hear from you.

Chlöe Swarbrick MP for Auckland Central
chloe.swarbrick@parliament.govt.nz | 09 378 4810

Funded by Parliamentary Service. Authorised by Chlöe Swarbrick, Green MP for Auckland Central, 1 Cross Street, Auckland.



621 Medland Road
For Sale \$895,000
Modern studio bach on 2.34ha overlooking Medlands Beach. www.barfoot.co.nz/903823

BARFOOT & THOMPSON
Call Mike or Karen, 021 825 826 / 021 765 776

763 Whangaparapara Road
For Sale \$650,000
Sunny northfacing bach on 830m² overlooking the harbour. www.barfoot.co.nz/899562

BARFOOT & THOMPSON
Call Mike or Karen, 021 825 826 / 021 765 776

Good Heavens
Dark Sky Experiences

www.goodheavens.co.nz

AGENCY NOTICES



NOTICE OF CHANGE TO FIRE SEASONS

Fire and Emergency New Zealand declares a prohibited fire season from 08:00am, Monday 2nd December 2024 in the following area(s):

All the islands of the Hauraki Gulf are in Prohibited Fire Season [Total Fire Ban]

Any fire permits issued during a Restricted Fire Season are **suspended from the date on this notice.**

See www.checkitsalright.nz for types of fire which have been authorised as not being fires in open air and do not need a permit.

Geoff Purcell
District Manager
Counties Manukau

To check the season status in an area please visit www.checkitsalright.nz or call 09 429 0258

Further information about fire seasons is available on www.fireandemergency.nz

NOTICE OF CHANGE TO FIRE SEASONS

Kia ora koutou,

GBI rural fire brigade sincerely thanks the community of GBI, for your continued vigilance around fire safety on our Motu.

What sort of weather this summer will bring is anyone's guess, but looking around the country it has been a busy start to the wildfire season

Aotea has a beautiful landscape, regenerating Kanuka/Manuka scrub covering much of our mountainous terrain, it is potent fuel – with our homes dotted amongst it.

A wildfire here could be devastating and heartbreaking.

My first two seasons of issuing fire permits for our island has given me the opportunity to chat and meet with people applying for fire permits, -and a few who didn't! – but were just in need of some help with the online process.

I'm so impressed with our knowledge of fire behaviour and respect for fire danger, we are a very practical community, who care for each other and the island.

Our brigade is always ready to respond, 50 strong vollies, and crew leaders with valuable wildfire experience gained on various overseas firefighting deployments in Canada and Australia.

We don't want to see our island burning when we should be enjoying life with our loved ones.

So, please take note and spread the word – total ban on outdoor fires is now in effect, for good reason.

Wishing you a happy summer season.

On behalf of the brigade, thank you.

Nick Yates

Outer Island Support Officer
Fire and Emergency NZ
Great Barrier Island
Kaahui Hau Komaru
Counties Manukau
Ph 021 812 851

AOTEA CONSERVATION PARK COMMITTEE NOMINATIONS

A Voice for People and Park Nominations are open for the next term of the Aotea Conservation Park Advisory Committee (ACPAC) 2025-2028. The committee represents iwi and local community voices. It provides valued advice about the management of the Aotea Conservation Park to the Department of Conservation (DOC).

ACPAC plays an active role in connecting the dots between people, place, and conservation. The committee discuss a range of issues, with an emphasis on broader policy and strategic direction.

They also provide feedback on applications for concessions and permits which helps DOC to make sound decisions.

Many do not realise the significant size of the Aotea Conservation Park, established in 2015. It covers approximately 43% of the island, or 12,282 ha. This includes the 3-day Aotea Track, Windy Canyon, Kaitoke Hot Springs, Tataweka, Wairahi and Hirakimata, and serves as a lifeboat for many endangered animals and plants.

The Park is home to unique threatened species like tākoketai/black petrel, niho taniwha/chevron skinks and pāteke/brown teal. Its network of walking tracks, and sites with cultural and historical significance, make it a special place for people.

Photo caption: 2022-2025 representatives Michael Ngatai (chairperson), Kenneth Fortzer (deputy chairperson), Donald Prince,

Hope Munro, Joanne O'Reilly, Marilyn Stephens, Lewis Ngawaka, and Valmaine Toki.

The nomination process:

If you or someone that you know is interested, find the fact sheet and nomination form at:

<https://www.doc.govt.nz/about-us/statutory-and-advisory-bodies/advisory-committees/>

Or contact adminacpac@doc.govt.nz

There are ten positions available; fees are paid for approved ACPAC business. Nominations close 5pm 13 January 2025. Members are appointed by the Minister of Conservation, Hon. Tama Potaka.



Aotea Conservation Park Advisory Committee



Call for nominations

Notice is given pursuant to section 56(1) of the Conservation Act 1987 that written nominations are sought for ten members of the Aotea Conservation Park Advisory Committee, to be appointed by the Minister of Conservation. Appointments will be for a term of up to three years.

The deadline for nominations is Monday, January 13, 2025. Nominations must be submitted to the Aotea/Great Barrier office of the Department of Conservation by 5:00 PM on that date. Submissions can be made via post, email, or hand delivery to the Okiwi DOC office.

Note: The DOC office will be closed 23rd December to January 3, 2025.

For nomination forms and further information contact Cara Fraider, email adminacpac@doc.govt.nz or post to Department of Conservation, Attention: Cara Fraider, 1501 Aotea Road, Great Barrier Island 0991. or visit www.doc.govt.nz

Alex Rogers
Director Operations, Tāmaki Makaurau/Auckland

MANTA SEASON HAS STARTED WITH A SPLASH!

The Manta Watch NZ team are determined to get the nation 'Manta Crazy' this season! The project is really starting to gain traction, and the team are keen to optimise this manta momentum to do good science, whilst connecting Kiwis to our wonderful offshore spaces.

Project Goals:

1. Increase ocean protection as a result of manta ray research and conservation management.
2. Raise manta ray's public profile Nationally and Aotearoa NZ as a highly significant place for manta rays internationally.
3. Build an engaged and active manta community that advocate for healthy oceans.

Conservation Wins!!

Over winter Lydia submitted proposals and subsequently got approval for the establishment of three Important Shark and Ray Areas (ISRA). ISRA are independently reviewed, globally recognised three-dimensional portions of habitat, important for one or more shark/ray species. These areas aren't MPAs, however set the foundation for future work in that space.

The first ISRA to be approved was the Hauraki Gulf, a 6,046.7 km² now globally recognised as a significant feeding area for oceanic manta rays.

Lydia is most proud of the final and largest ISRA to be approved, named the Colville Ridge, a migratory corridor for oceanic manta ray, spanning 437,371 km² (0-1,888m) from Aotearoa's east coast up and into the jurisdiction of Fiji and Tonga!

Aotearoa's first ever aerial survey on oceanic manta rays

- On 4 th Dec MWNZ invited RNZ, TVNZ, the CEO of WWF to join them on their first ever aerial survey of the Hauraki Gulf in search of oceanic manta rays.
- The team recorded a total of 18 oceanic manta rays, and a fever of 15 spintail devil rays.
- Operated by Island Aviation, the survey was a massive success not only rising the profile of the project but also the health of the Hauraki Gulf.
- Special thanks to Whakatapu Aotearoa Foundation for making this mahi possible!

Manta App Launch

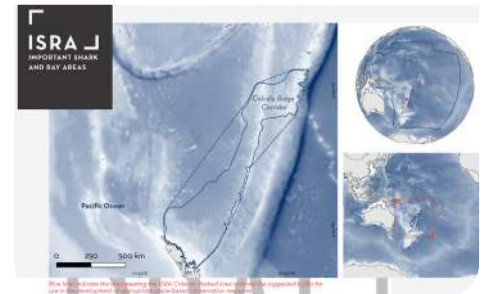
We excited to announce the launch of our very own (and world first) Manta Sighting App.

As of 21 December the public will be able to download the app, which is free and compatible with both Apple and Android devices. The key objectives for the app are to:

1. Streamline data collection
2. Improve data quality
3. Boost community engagement

Massive thanks to Arbie for making this all possible, the Manta Watch NZ App will be available in all the usual places as well as though the projects socials and website.

Words by Lydia Green, Director of Manta Watch NZ



SEAWEED EXPERT VISITS THE MOTU

Last month, Aotea had the pleasure of hosting renowned seaweed expert Wendy Nelson for a hands-on workshop, organised by Ecology Vision. The event offered participants a unique opportunity to learn about these often-overlooked treasures of our marine environment.

The workshop began with a short talk, covering the habitat, taxonomy, and various uses of seaweed, as well as the important ecosystem services they provide. The outdoor portion of the workshop at Boatshed Rock was timed with low tide for easy access to the intertidal zone, and thanks to a stormy night, there was plenty of seaweed to explore.

Wendy, with her vast knowledge and infectious enthusiasm, guided the group through the process of collecting and identifying seaweed. Along the way, we were treated to the sight of a beautiful nudibranch in the tide pools – a bonus for those with keen eyes! After gathering a range of seaweed species, Wendy taught us how to mount them (create pressings), a technique typically used to preserve specimens for scientific study, though at the workshop, many of us used it to create beautiful pieces of art.

Wendy's deep appreciation for these often-overlooked marine algae was evident. Most of us are much more familiar with our native bush environments than with what lies beneath the waves. This workshop served as a powerful reminder of the wealth of knowledge to be discovered about Aotea's marine life and the vital role seaweed plays in our coastal ecosystems.

A huge thank you to Wendy Nelson for sharing her expertise, and to the Local



Board and Auckland Council for their ongoing support of Ecology Vision. Events like this are possible because of their generous backing, and we're already looking forward to future opportunities to connect with our natural world.

For more in-depth information about the workshop, check out Barry Scott's upcoming article in AGBET's summer issue of Environmental News.

Words by Isobel Edwards, Ecology Vision

Raupō Taranga

Sunday Summer Series
at Glenfern Sanctuary

with Rodney
Ngawaka

10am-3pm

on the last Sunday of each month

Sun 29 Dec | Sun 26 Jan

Sun 23 Feb | Sun 30 Mar

Come, be inspired and view the environment through the lens of local mana whenua.

Please bring a picnic, coffee and teas will be provided.

 Glenfern Sanctuary
 glenfern.org.nz
 info@glenfern.org.nz



560 Blind Bay Road
For Sale \$675,000

4.2997ha with stunning views and quartz crystal vein. www.barfoot.co.nz/897317

BARFOOT & THOMPSON

Call Mike or Karen, 021 825 826 / 021 765 776



For Tender - Lot 32, Kaitoke Lane
74.45 hectares: Location, beach views & subdivision potential. barfoot.co.nz/902200

BARFOOT & THOMPSON
Call Mike or Karen, 021 825 826 / 021 765 776



Aotea Painting
PAINTING, WATER BLASTING, SCAFFOLDING

CALL US FOR A FREE QUOTE

- > Painting
- > Waterblasting
- > Polyurethaning
- > Scaffold hire
- > Airless spraying
- > Staining
- > Residential
- > Commercial
- > Interior & Exterior

09 429 0509 | 027 511 8269 | aoteapainting@gmail.com

D Clough Builders Ltd
Licensed Building Practitioner

New builds | Renovations | Decks
Scaffolding hire | Small digger work
Driveways | Concrete pads

022 381 6652
dayneclough@me.com



Open 7 Days

Monday - Friday
8.30am - 5pm

Saturday 9am-4pm
Sunday 9:30 am-4pm

09 4290 852
info@clarisstoreaotea.nz
clarisstoreaotea.nz

Claris Store
Fresh milk, bread, fruit and vegetables. Cold beverages including beer and wine. Ice and ice cream. Locally made products. Bait, fishing gear and all other grocery and general needs




For Sale - Navy House, Gray Road
3.7ha, two dwellings, orchards, 10 min walk to Awana Beach. www.barfoot.co.nz/903559

BARFOOT & THOMPSON
Call Mike or Karen, 021 825 826 / 021 765 776



NZ REGISTERED ELECTRICIAN
DOMESTIC // COMMERCIAL // INDUSTRIAL

MATHEW O'SULLIVAN
021437508
MATOSULLIVAN@GMAIL.COM



Port Fitzroy Store

LPG ~Fruit & Veg ~ Dairy products
Bread ~ Meat ~ Ice cream ~ Snacks
Bottle Store ~ Other groceries
Craft and Sundry Items

Monday - Saturday: 9am-5pm
Now closed on Sundays

09 429 0056 | fisher.3@xtra.co.nz



SOLARCRAFT
SOLAR SYSTEMS MADE SIMPLE

- Customised & expandable solutions
- In-house installation & servicing
- Residential & Commercial
- Online remote monitoring
- 25-40 year warranties



0508 CRAFTY
info@solarcraft.co.nz
solarcraft.co.nz

LOCAL REFERENCES AVAILABLE



LJM
Plumbing & Gas

LOCKY@LJMPLUMBING.CO.NZ 0212410808

BARRIER'S RESIDENT SALES TEAM

Mike Jensen 021 825 826
Karen Lombard 021 765 776
m.jensen@barfoot.co.nz
k.lombard@barfoot.co.nz

BARFOOT & THOMPSON



Scan for listings



MACNAB BUILDERS
Hamish | Licensed Builder

027 520 9957
macnab.building@gmail.com

PEOPLE & POST
NORTH TO SOUTH SHUTTLE SERVICE

OPERATING MONDAY - SATURDAY

TRYPHENA - PORT FITZROY, DEPARTS - 10AM
PORT FITZROY - TRYPHENA, DEPARTS - 11AM

From \$30 PP



FREE TO AOTEA CAR RENTAL CUSTOMERS

AOTEA CAR RENTALS

0800 426 832
gbbuses@xtra.co.nz

GREAT BARRIER TRAVEL

RG CONTRACTING LTD
Digging Barrier since 1995

EXCAVATIONS	SITWORKS & FOUNDATIONS
RETAINING WALLS	DELIVERIES sand screened soil metal
POLES drilling ramming	DRIVEWAYS concrete aggregate
LANDSCAPING & DRAINAGE	CONTACT Roger 0274290876 Rory 021 1518924

rogerguthrie@xtra.co.nz